



## Fall protection system: vertical rail lifeline.

### Use

Fall protection system for any user attached to this system. Particularly adapted to all vertical access for inspections, repairs, maintenance.

Railok can be mounted on all kind of structures (wood, steel, concrete), chimneys, antennas allowing one (1) or more persons to go up and down on those structures in perfect safety.

### General description

The rail is permanently attached to the ladder or structure, centrally or laterally. The trolley runs on the rail during ascending and descending and block only in case of fall.

Rail may be fixed to ladder rungs or the stringer.

The bottom part of the rail shall be stopped 50cm above the ground.

Top part can be stopped up to 75cm above the ladder (with corresponding support).

### Use

One trolley may operate on each individual 3m length of rail at any one time, 1 fixation per meter.

### Shock absorbance

Energy Dissipating Unit ensures maximum force exerted on the body in the event of a fall does not exceed 6kN, in accordance with European standards.

### Legislation and standards

Railok system conforms to EN 353-1 and is marked CE. It must be installed according manufacturer instructions.

### Installation

For normal system operation, ladders should be positioned at max 15° from the vertical.

The system may be attached to ladder rungs in a variety of ways:

- with U clips, J clips.
- Bolted directly on the stringer

### Load requirements

Ensure the climbing structure to which Railok is to be installed is capable of supporting the loads imposed by the system. The required bracket load may be assumed to be distributed evenly between the number of rungs to which it is attached.



CE

### Additional components

The Railok system is designed for use with SALA Karabiners and recommended Harness KB1300S (N300/S) with front body attachment or KB1EXO/x for unrivalled comfort and security.

### Servicing/maintenance

No specific maintenance outside standard mandatory inspections.

Visually check rail and grab for corrosion before and during each initial ascent.

Average lifespan: 10 years.

Full check and servicing by manufacturer of the system (including cable grab) required:

- Annually.
- After any fall.



# Fall protection system: vertical rail lifeline.



## Technical specifications

### Load requirements

Ensure the climbing structure to which Railok is to be installed is capable of supporting the loads imposed by the system. The required bracket load may be assumed to be distributed evenly between the number of rungs to which it is attached.

### Trolley (fig 1) REF KC11050234:

Supplied complete with Energy Dissipating Unit (EDU) and self-locking hook for karabiner connection directly to the users harness

Material: Light alloy aluminium, energy absorber in polyester and karabiner in zinc plated steel .

### Rail (fig 2) REF KC1P1051, KC1P10501S:

- Standard length: 3m in a 'top hat' section for superior strength and rigidity
- Supplied in kit with one set of Joint Plates, two Stop Plates, relevant bolts and suitable number of clips (precise at order kind of support and dimensions)
- Material : Alloy aluminium or stainless steel
- Weight: 4kg in alu, 8kg in stainless.

### Rail mounting parts (fig 3, 4, 5, 6)(Ref included in above kits):

Wide range of attachment assemblies available to fix the rail on the structure. Fixations in U, J for rungs, specific fixations for stringer in aluminium or stainless steel.

### Joint Plates (fig 7) REF KC11059:

Dimensioned to fit into top hat section of rail ends, ensures smooth running and ease of installation. Secured by four bolts supplied.

- Material : Alloy aluminium or stainless steel

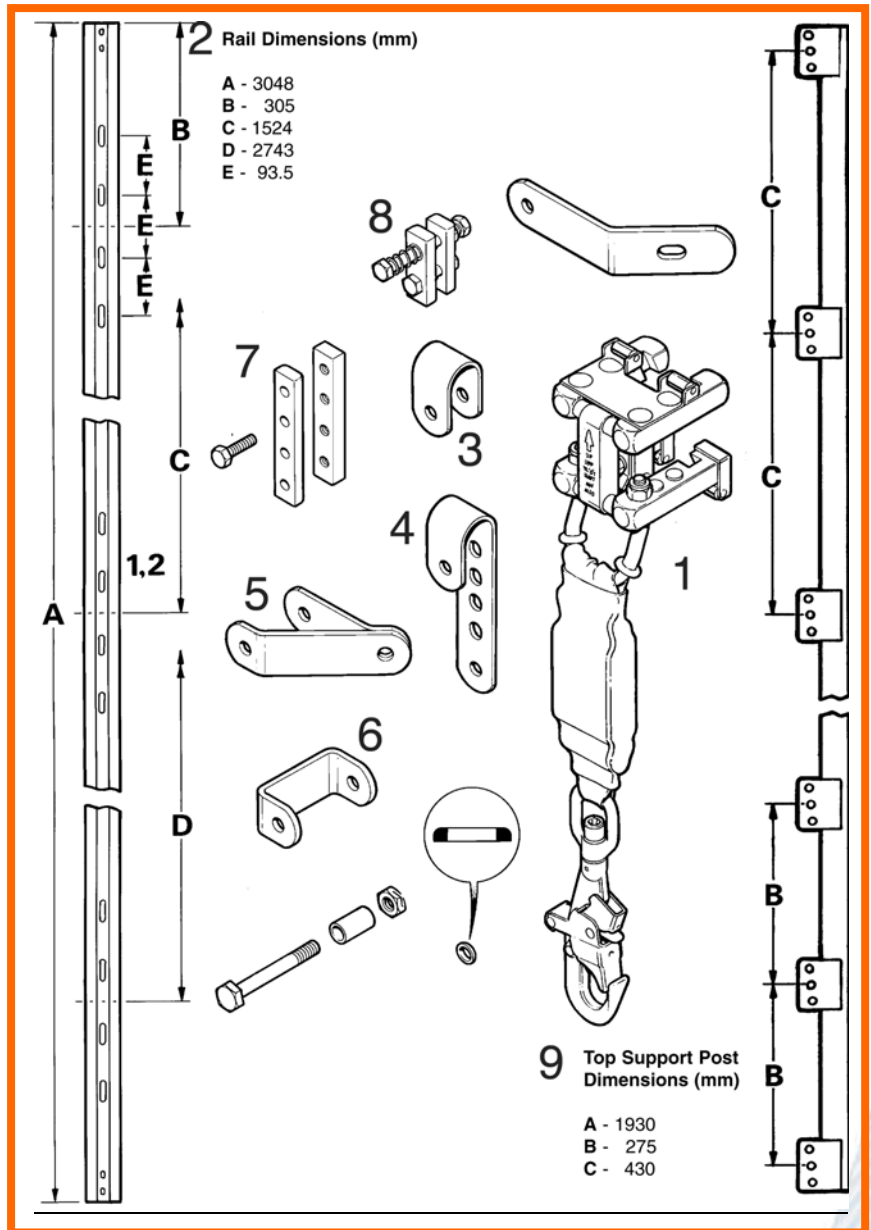
### Stop plate (fig 8):

Prevent accidental disconnection at top of ladder. Exist in :

- Fixed version. REF KC11065.
- semi-permanent sprung version to allow manual disconnection REF KC1064.

### Options

- **Existe en version Inox**
- **Différents type fixations existent pour**



Capital Safety Group reserves the right to modify the specification of this product without prior notice. Descriptions, colours, pictures and diagrams herein appear for guidance only.

### Top support post (fig 9) REF KC13000552:

Top support post to allow rail extension above structure. Max: 70cm.

- Specific application: contact us.

### Bolts, nuts:

Material: Stainless, M10, Locknuts

